

Logging Businesses 2016

Profile for Wisconsin with Select Minnesota Data

Mark Rickenbach, Julie Ballweg, Tricia Gorby,
Craig Johnston, & Melinda Vokoun

Financial support from the WDNR



Forest and Wildlife Ecology
UNIVERSITY OF WISCONSIN-MADISON

Overview

- Background and approach
- Preliminary results
 - Production
 - Capacity
 - Demographics
- Observations and feedback



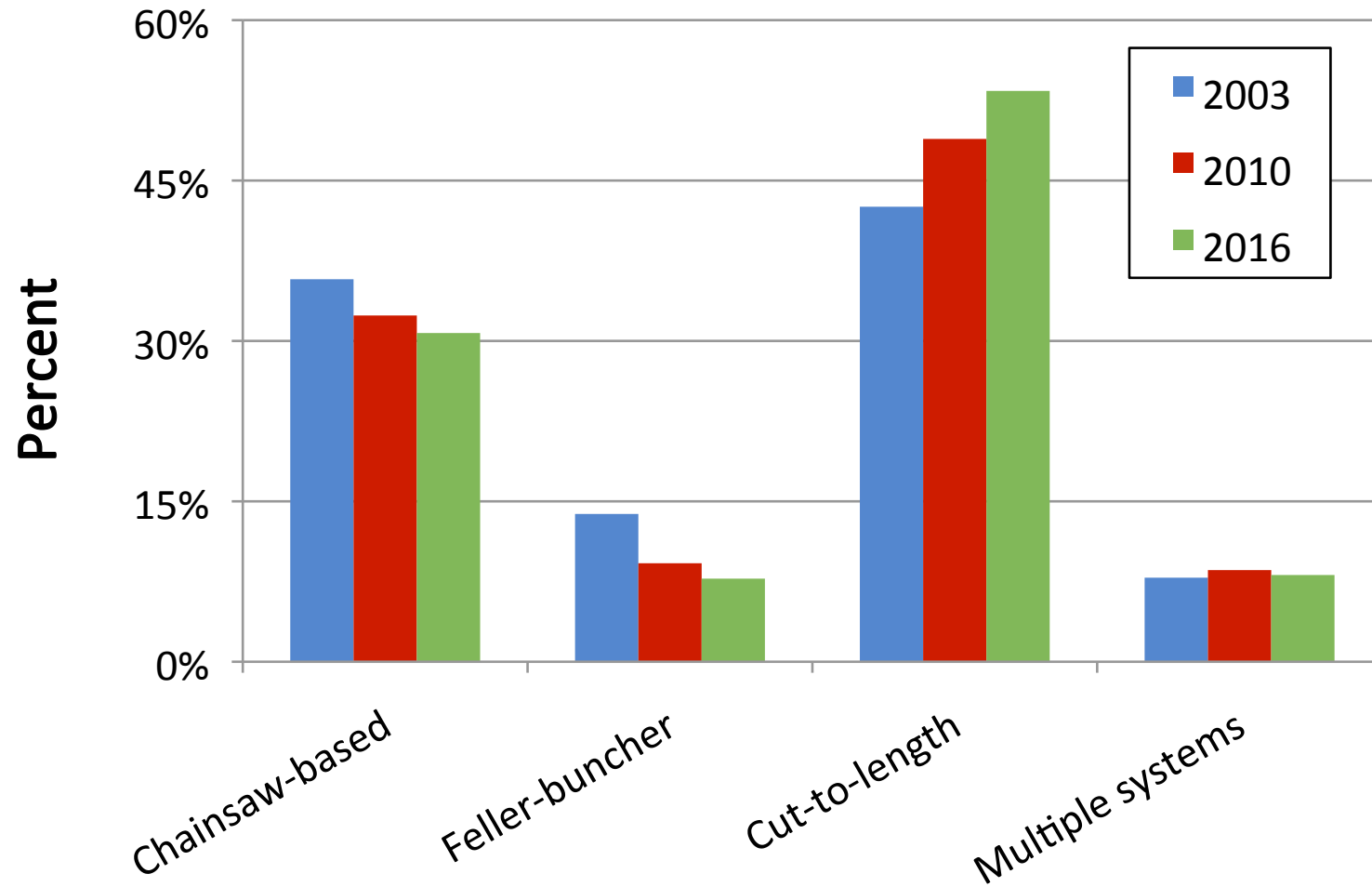
Background and Approach

- Previous surveys
- Approach for this survey
 - Lake States design
 - Survey implementation
- Deleted responses with 2016 production < 100 cords
- 423 responses (53%), but 110 not logging

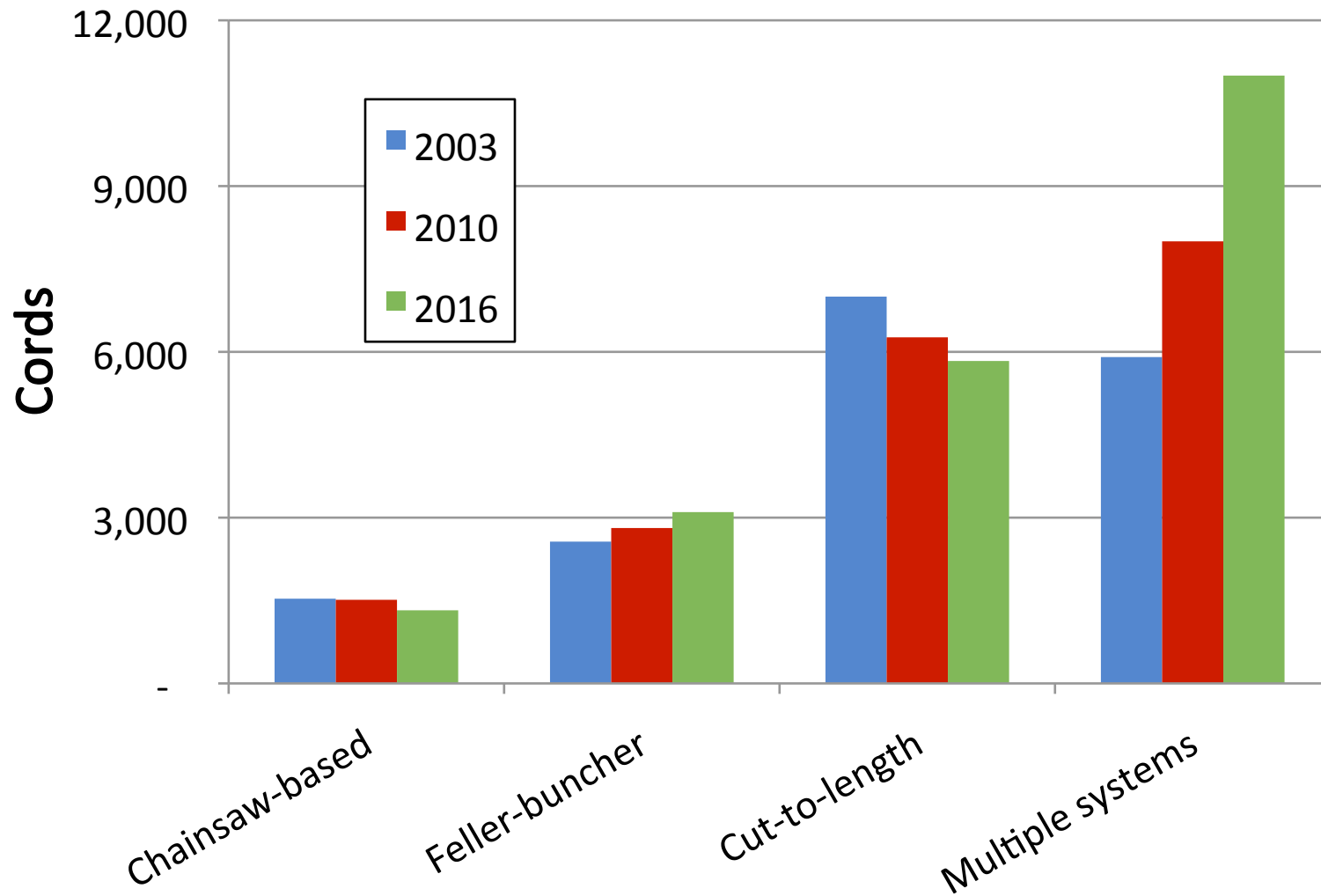


PRELIMINARY
RESULTS

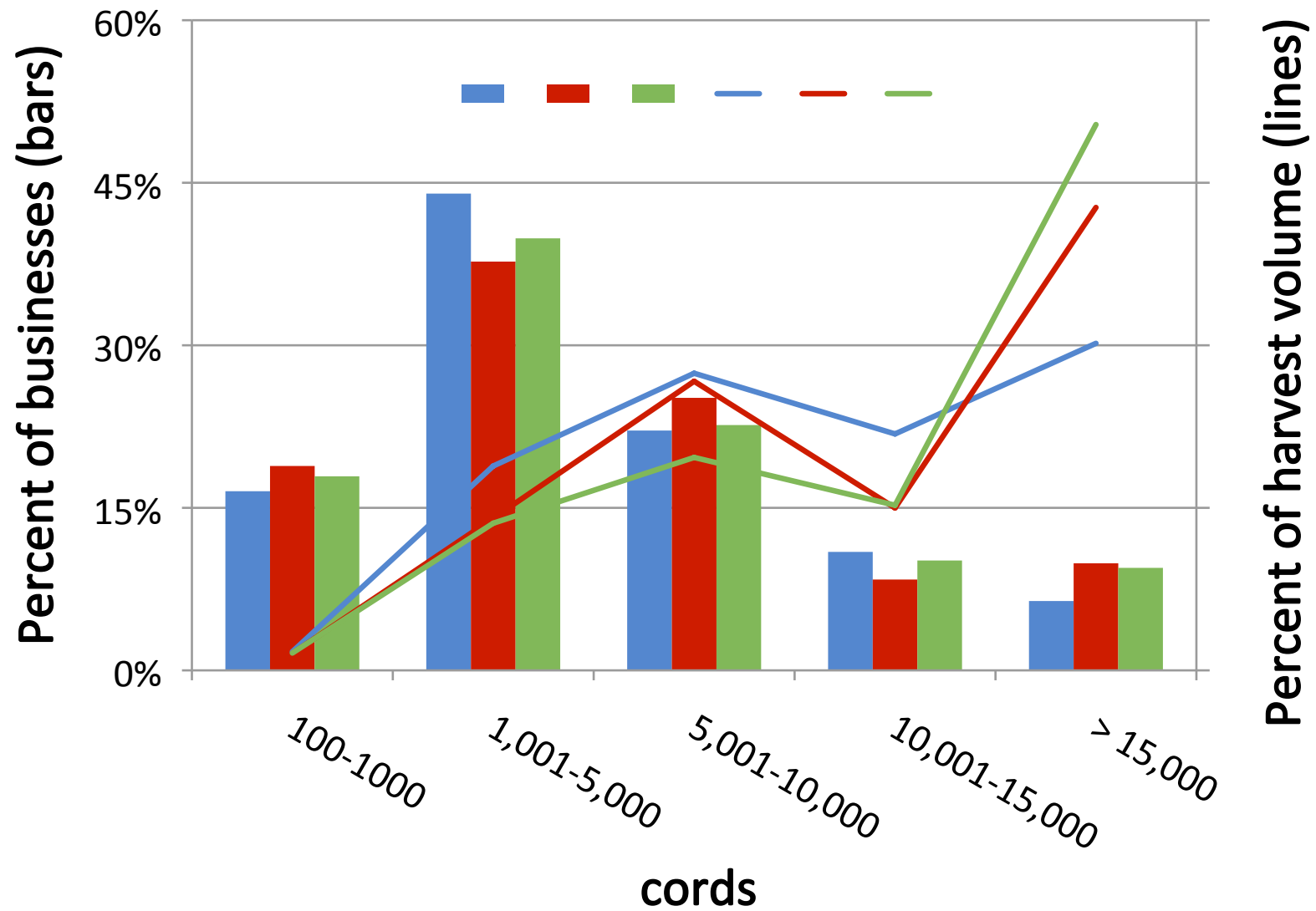
Businesses by Harvest System



Median Production

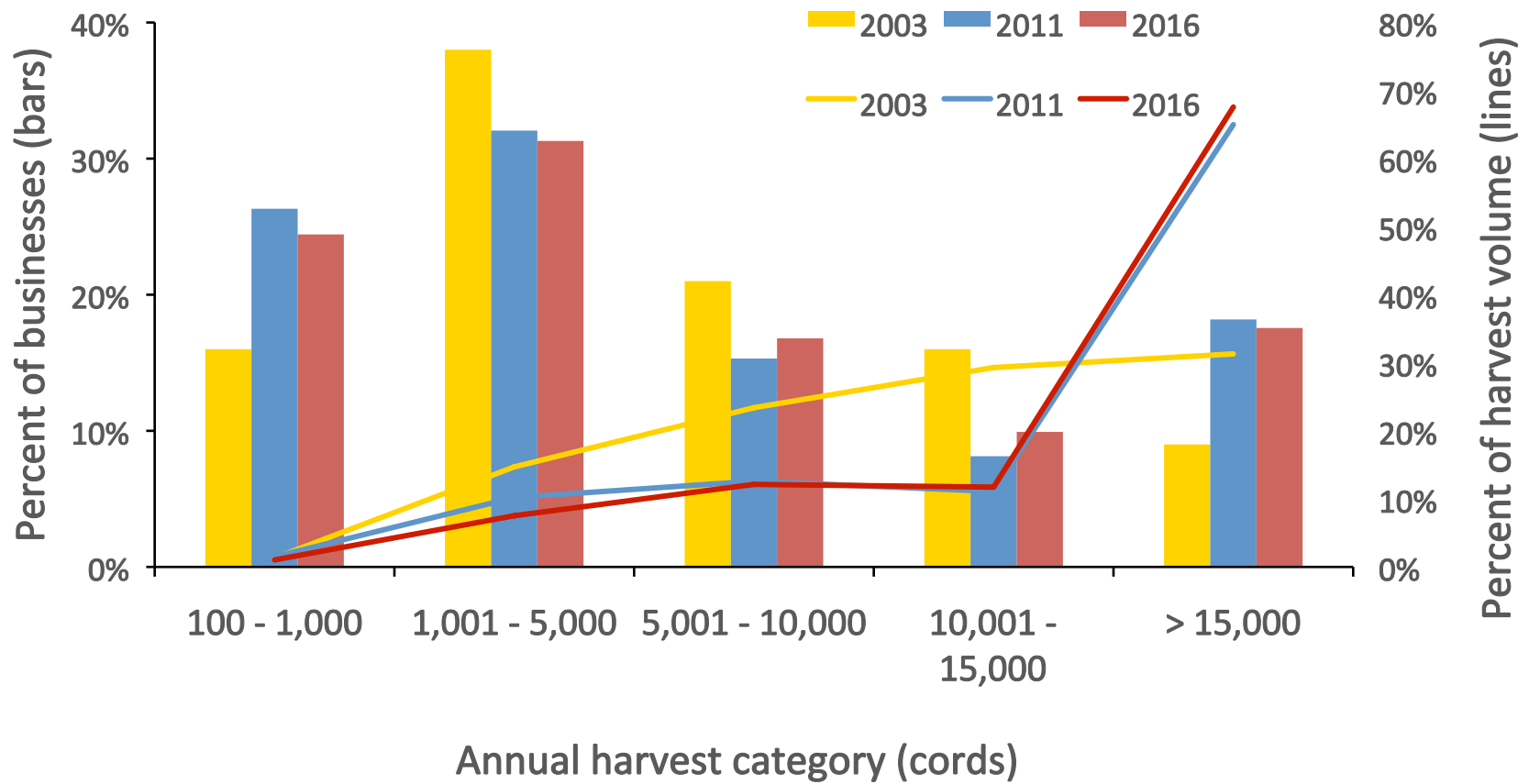


Production by production category

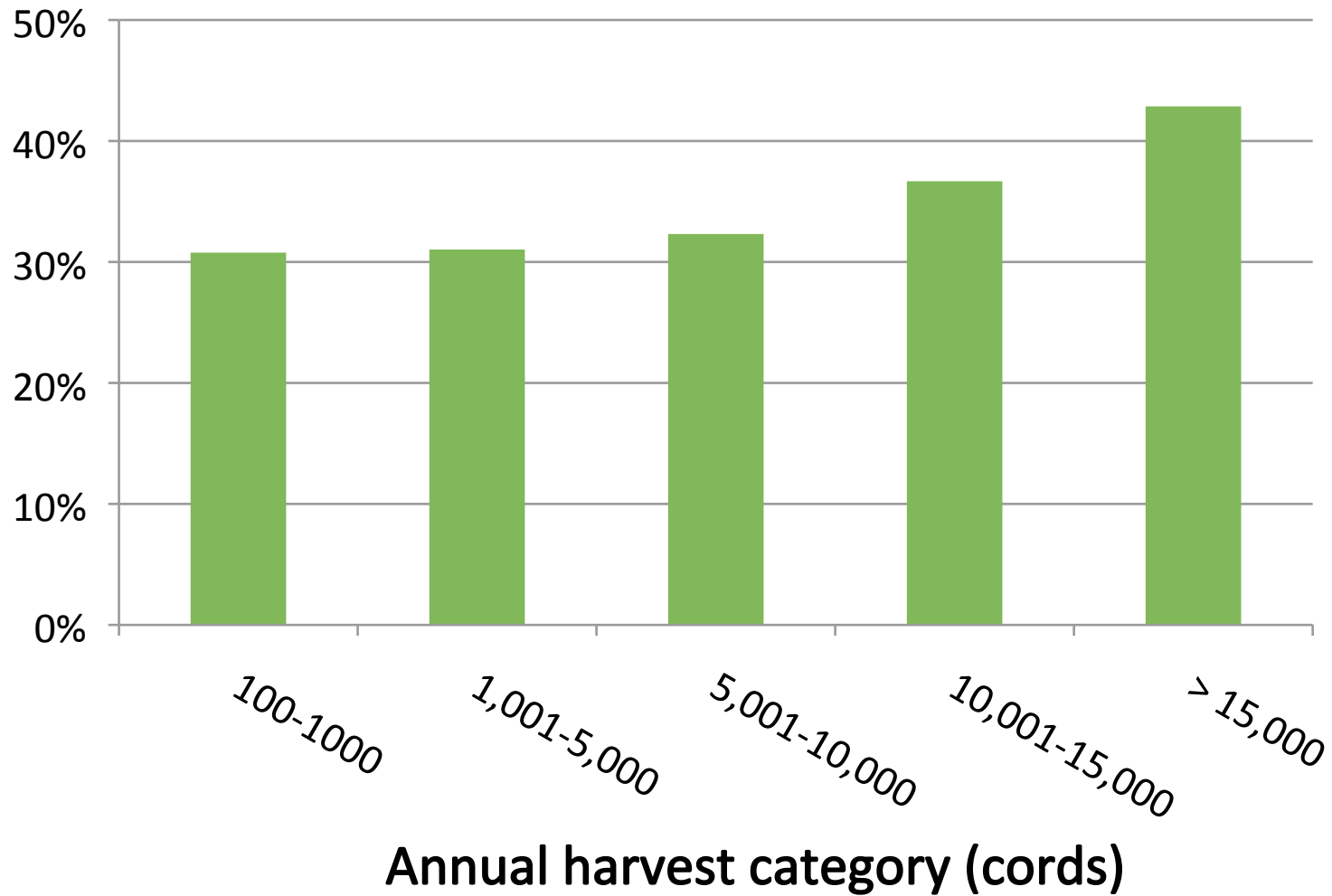




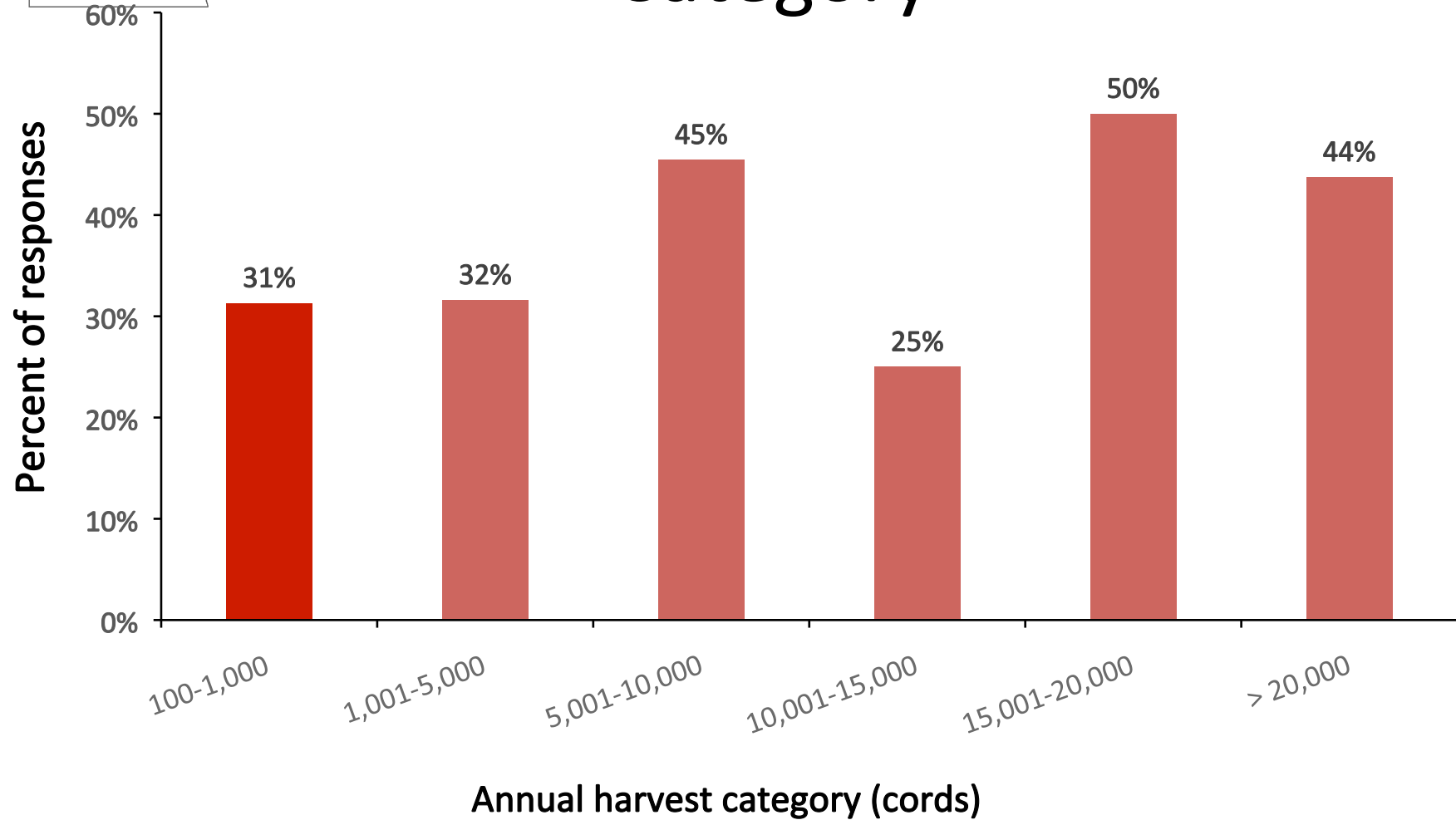
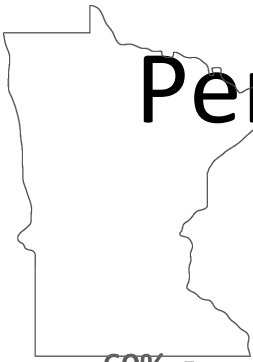
Percent of Businesses by Annual Volume Harvested in Minnesota



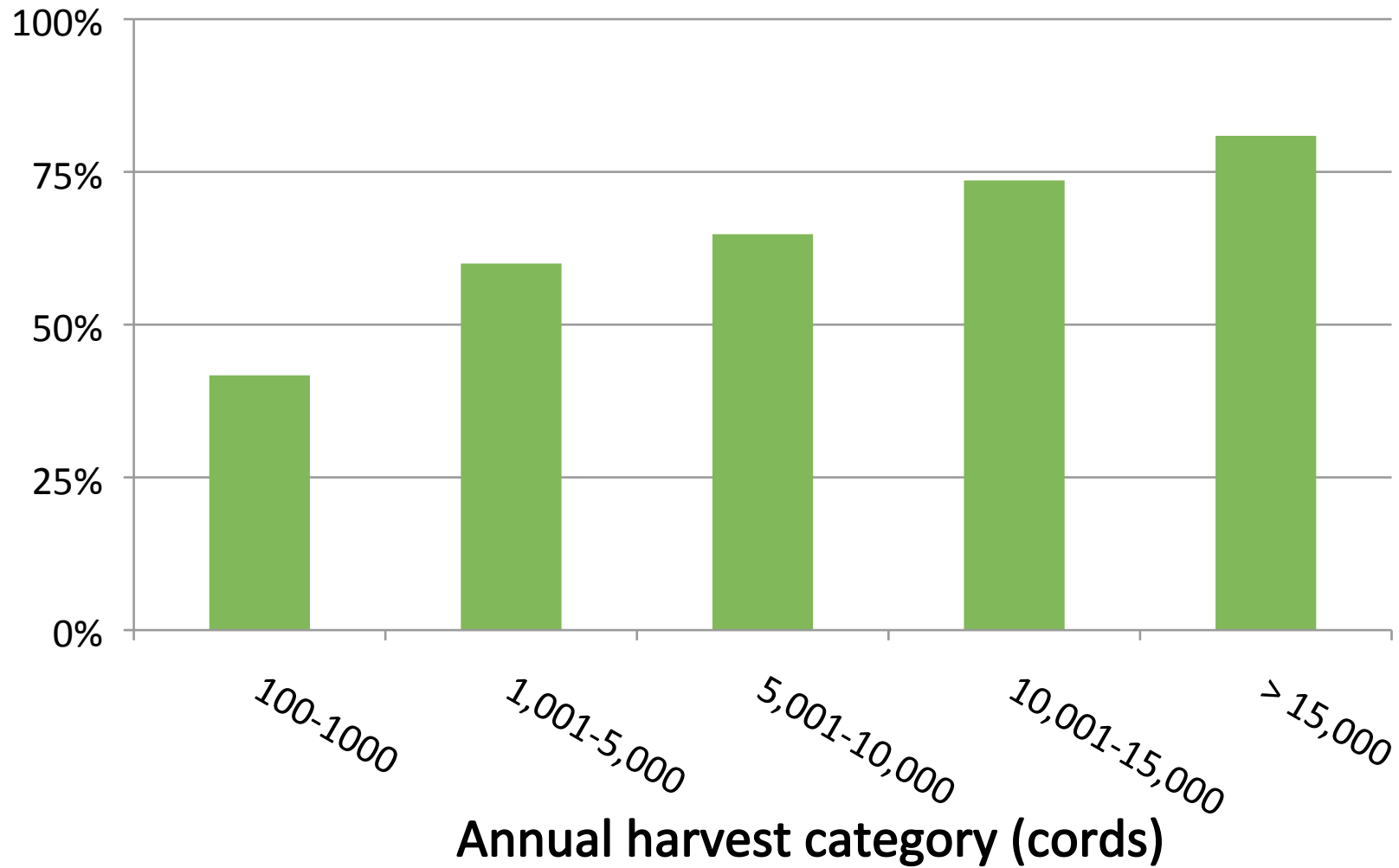
Percent Operating at Full Capacity (self-reported)



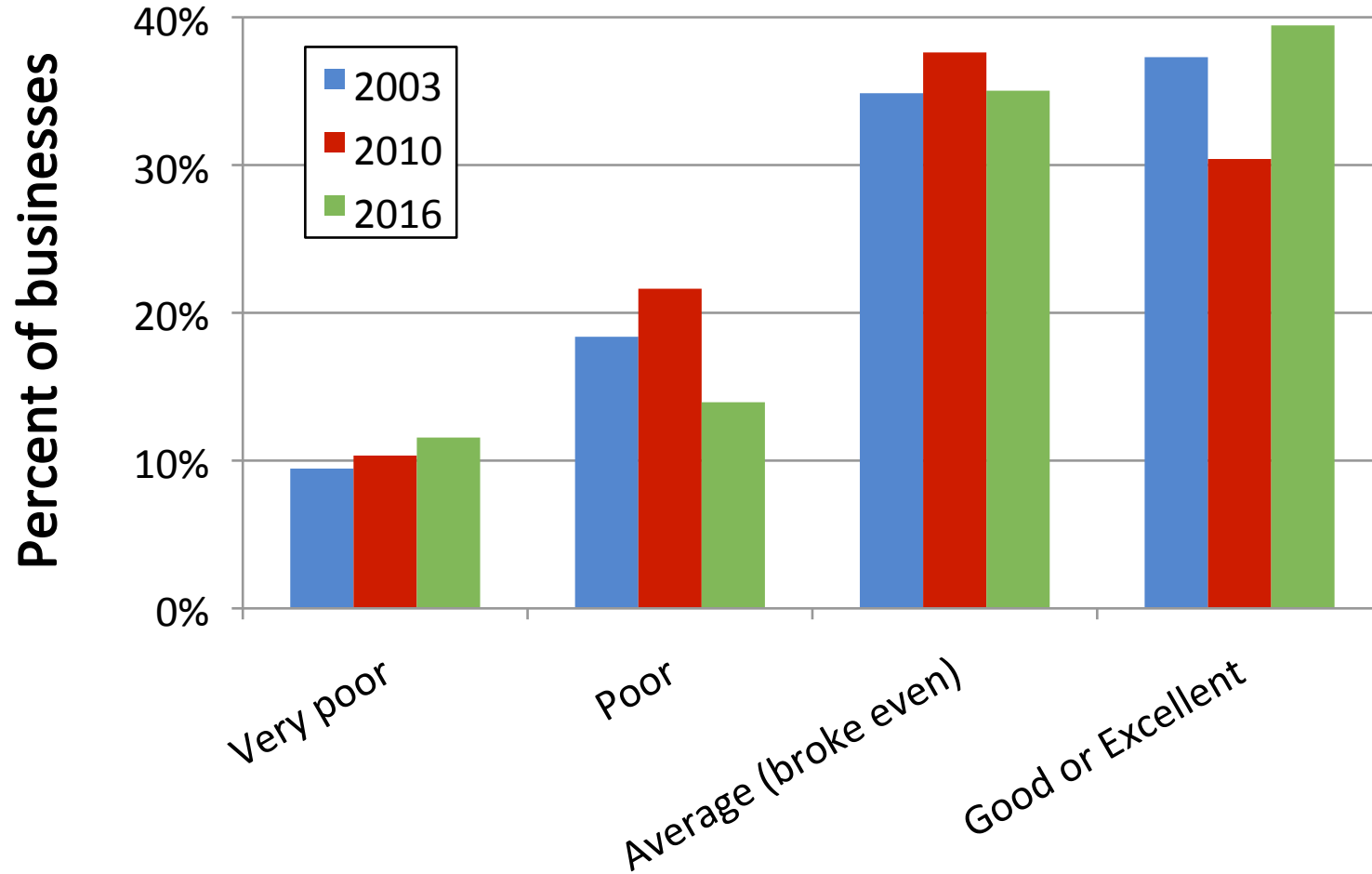
Percent of Respondents Operating at Full Capacity by Annual Harvest Category



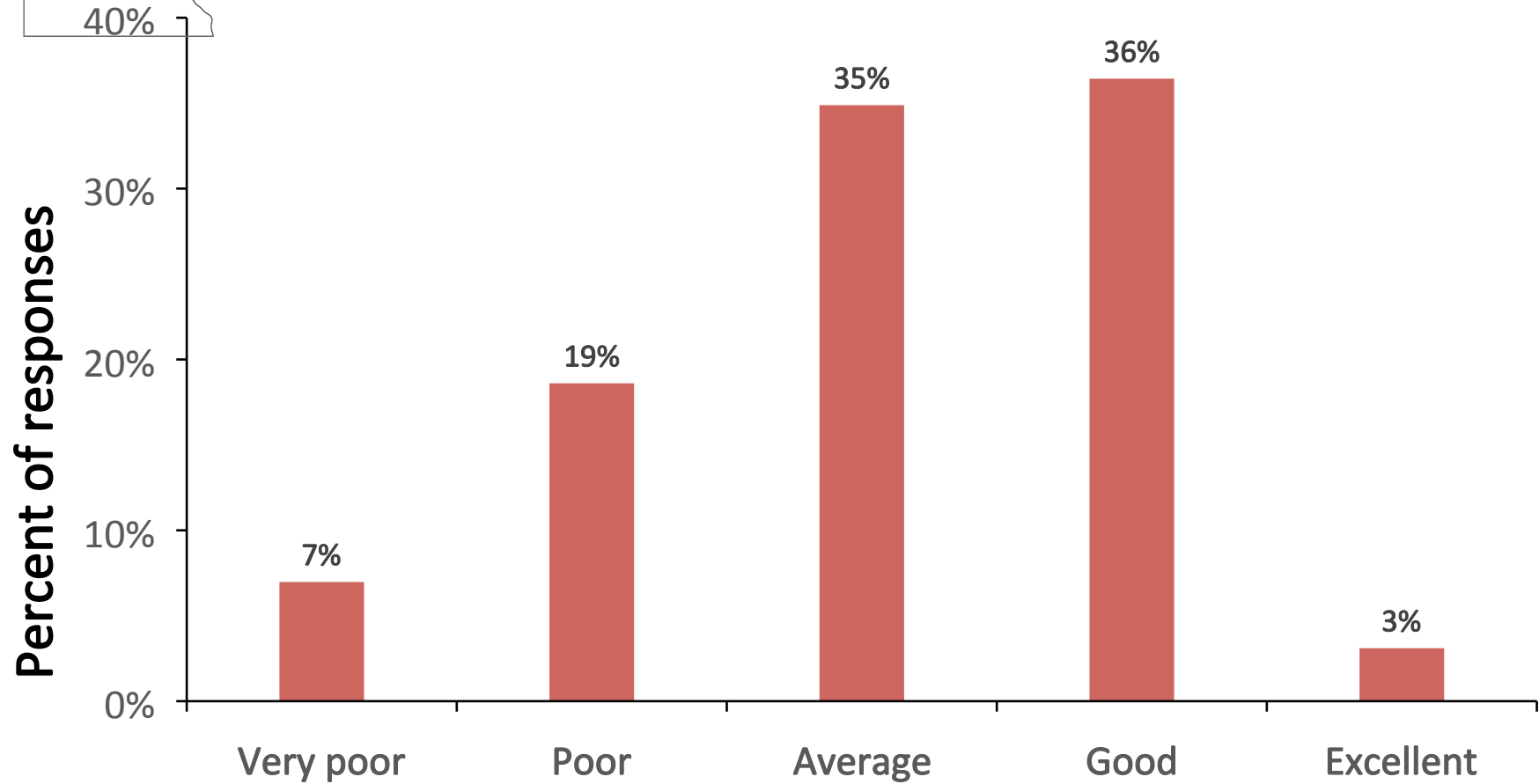
"Efficiency" for those NOT at Full Capacity (self-reported)



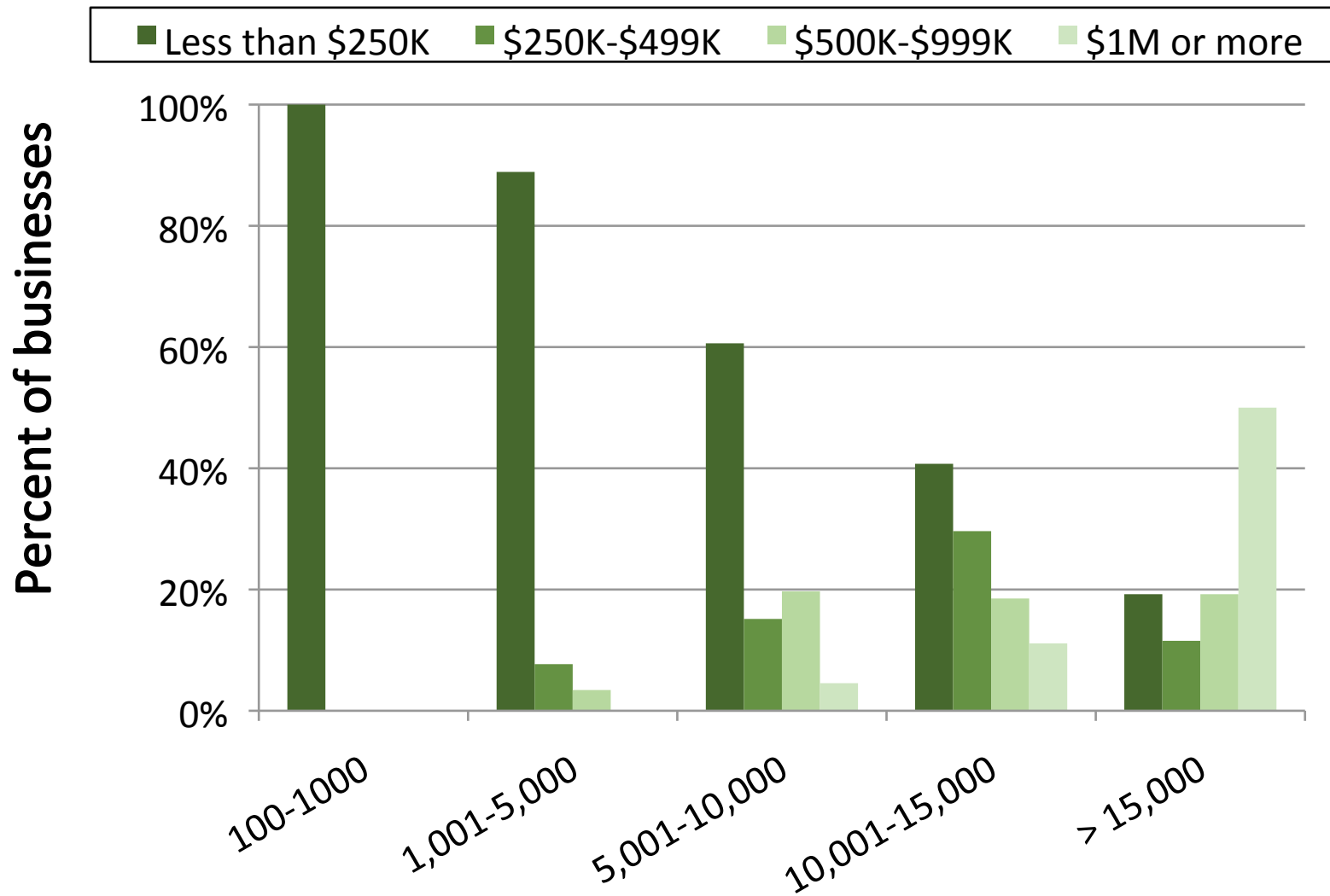
Self-reported profitability



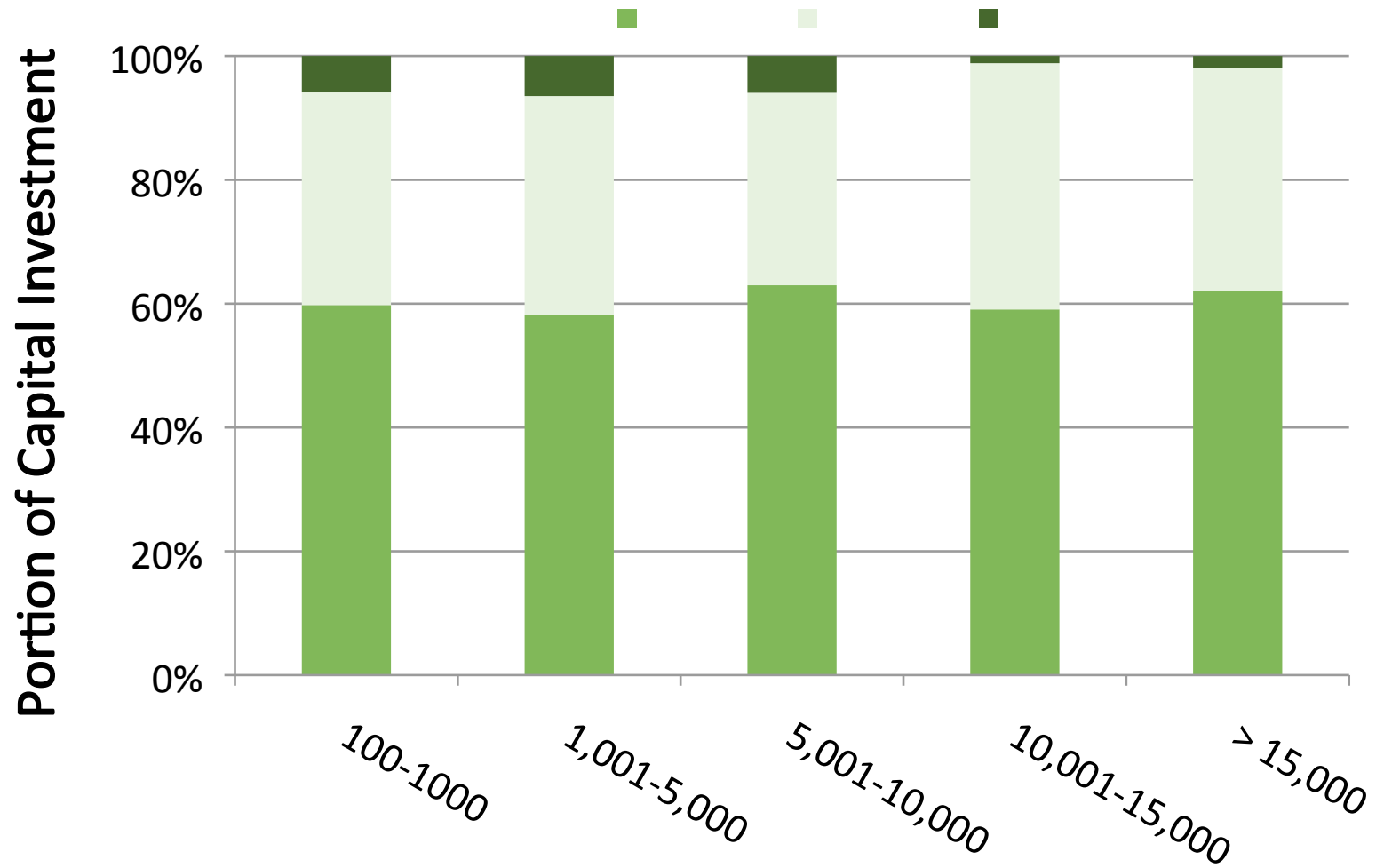
Distribution of Profitability 2016



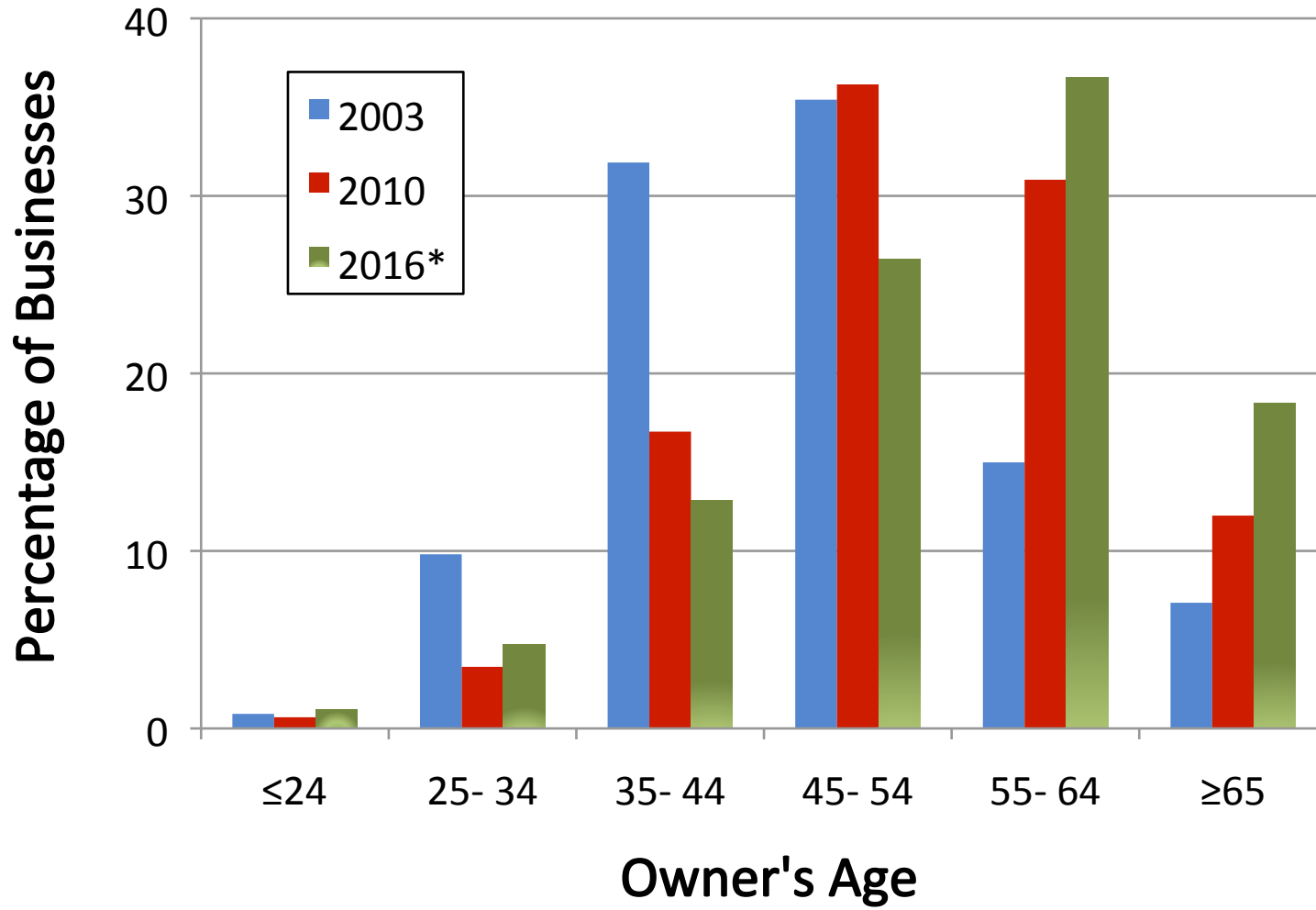
Capital investment by production category



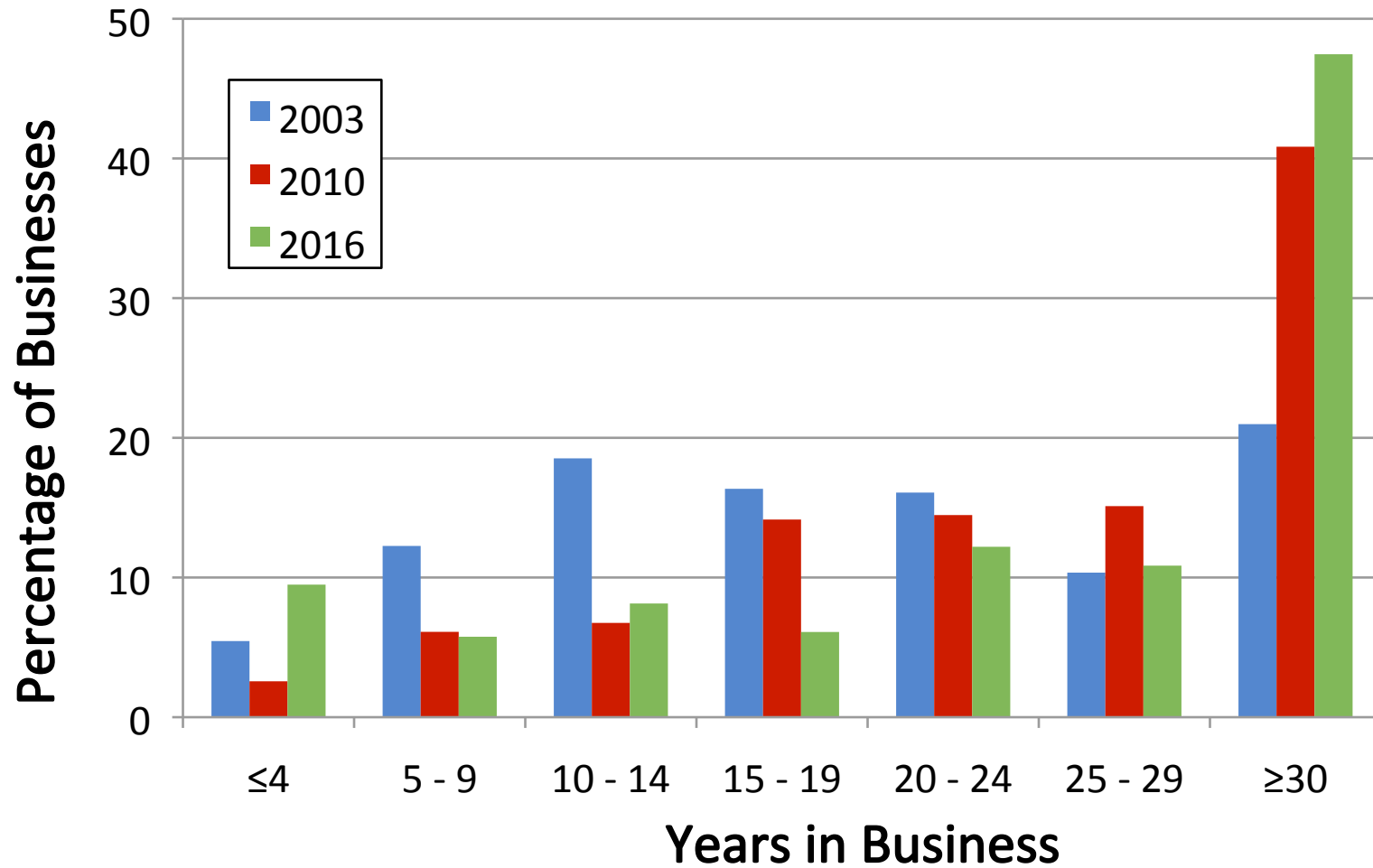
Capital investment by production category



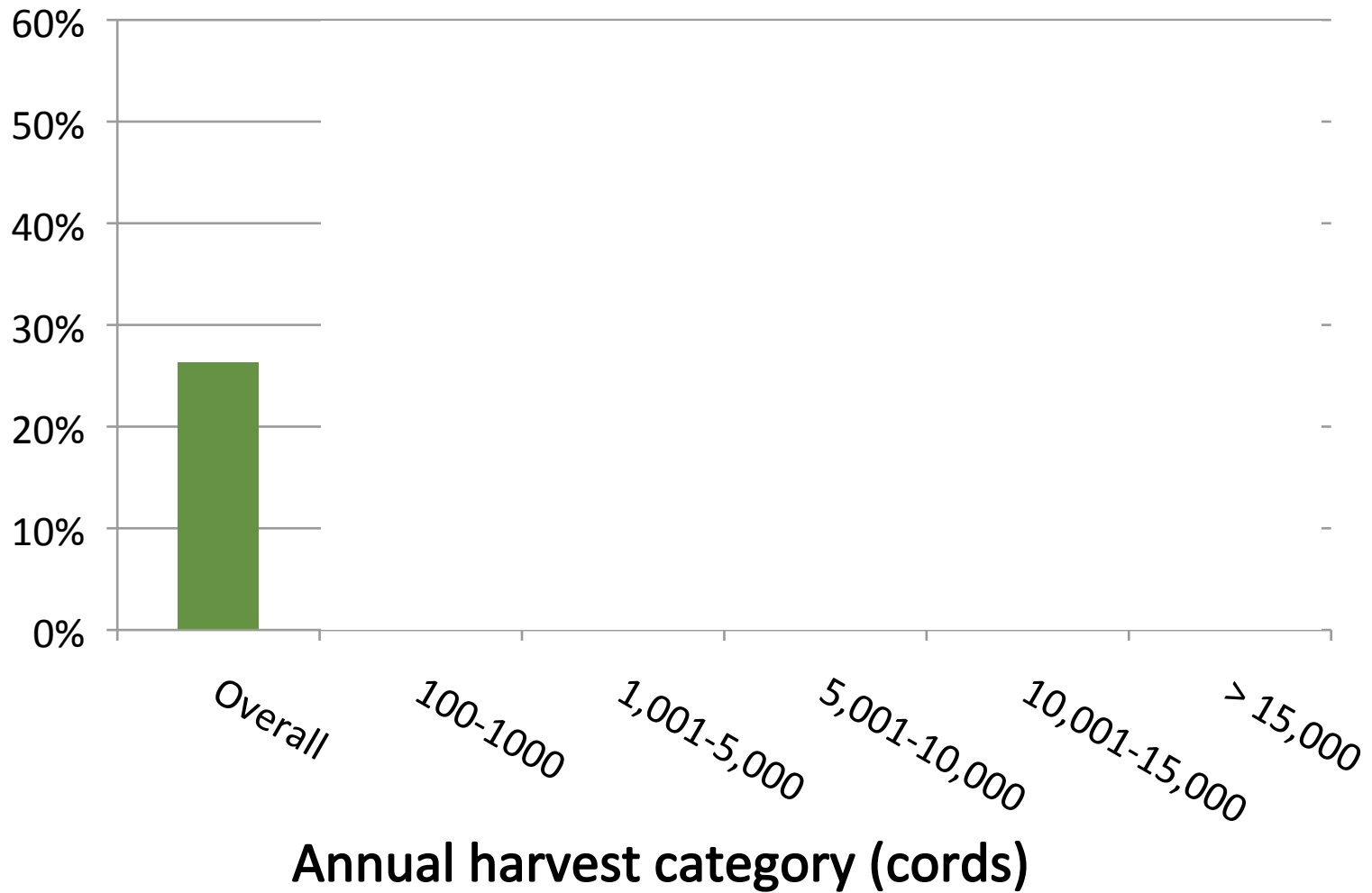
Age of owner(s)



Age of Business



Percent reporting they **won't** be in business in five years



Observations

- Production continues to shift toward larger businesses
- Still a significant reliance on hand-felling
- Most owners are now gray (or bald!), with more retirements expected
- In terms of how we produce fiber we look different from Minnesota, but face many of the same challenges
- Curious as to what we'll learn from more direct comparisons among the three Lake States.

More to come

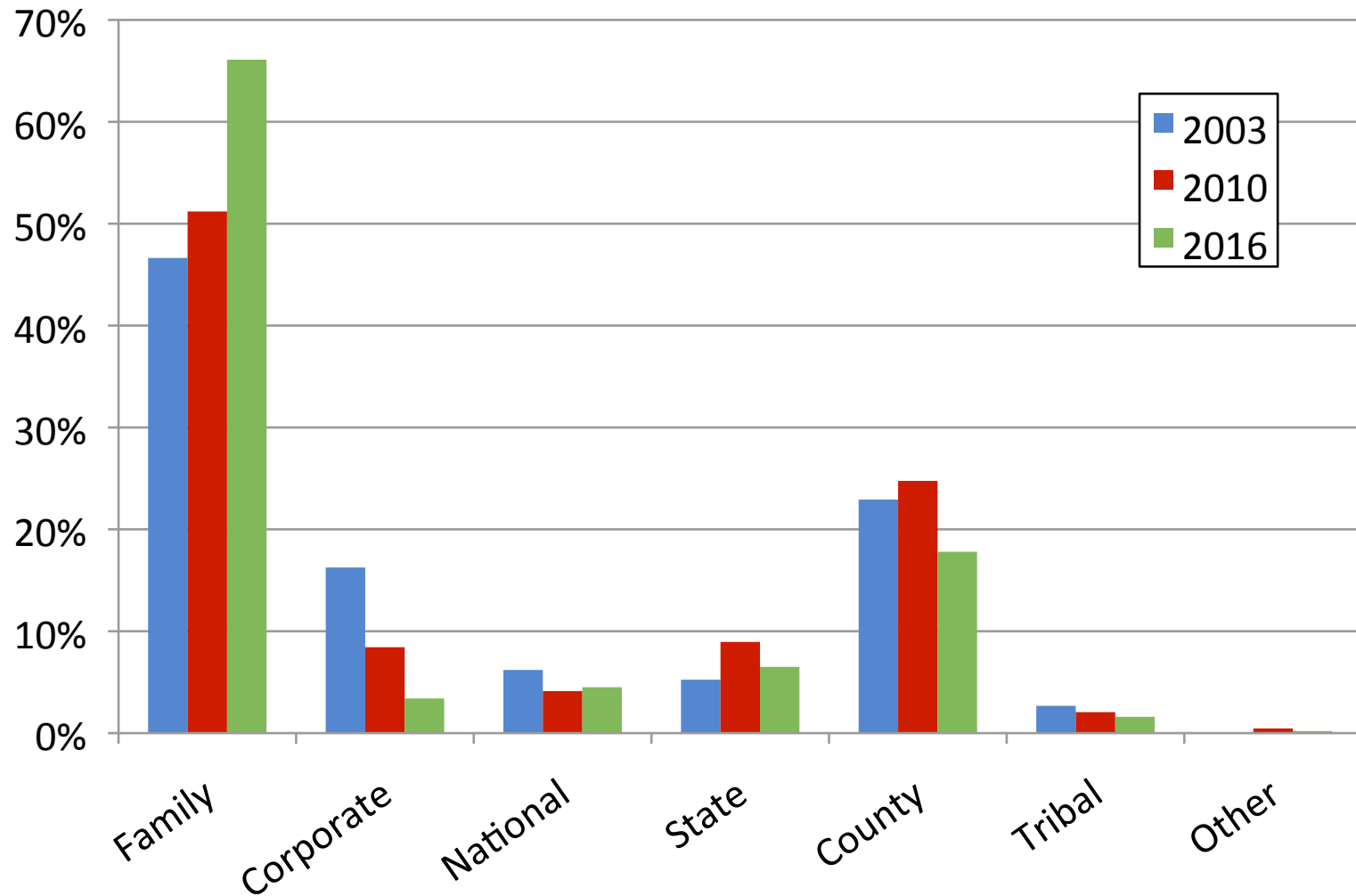
- Employees and subcontractors
- Timber sales and seasonality
- Annosum and oak wilt restrictions
- Distance and hauling
- Future workforce

See <http://notcountingtrees.org>

Questions and discussion

More at <http://notcountingtrees.org>

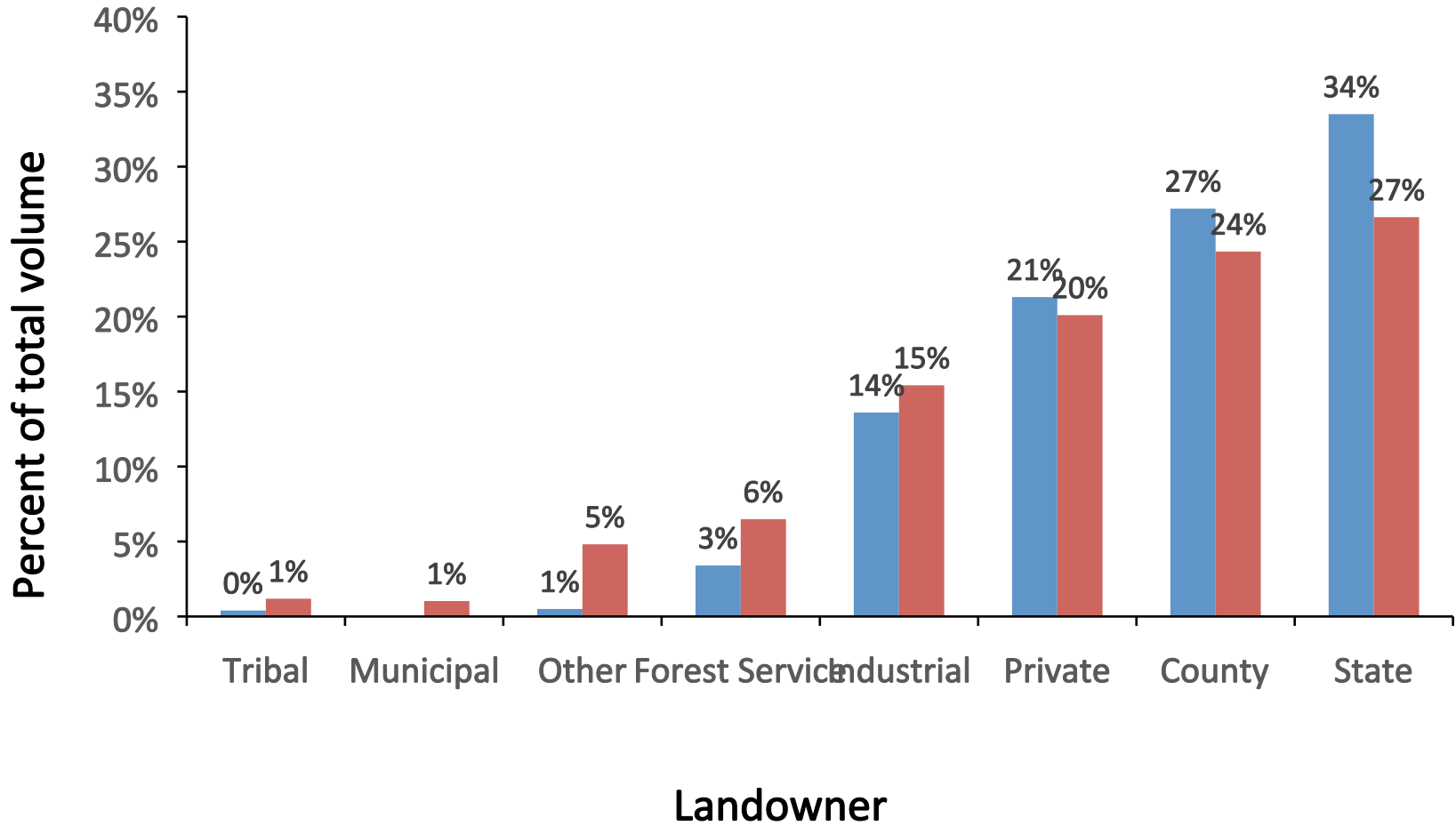
Portion harvested by landownership source





Harvest Volume by Landowner

■ 2011 ■ 2016



Portion harvested by product type

