



Forest Sciences Section Update

**Carmen Hardin
Section Chief**



High Points

- Silviculture Guidance Team
- Program Vacancies
- Forest Health Program
- Nursery Program
- Sciences Program

Silviculture Guidance Team





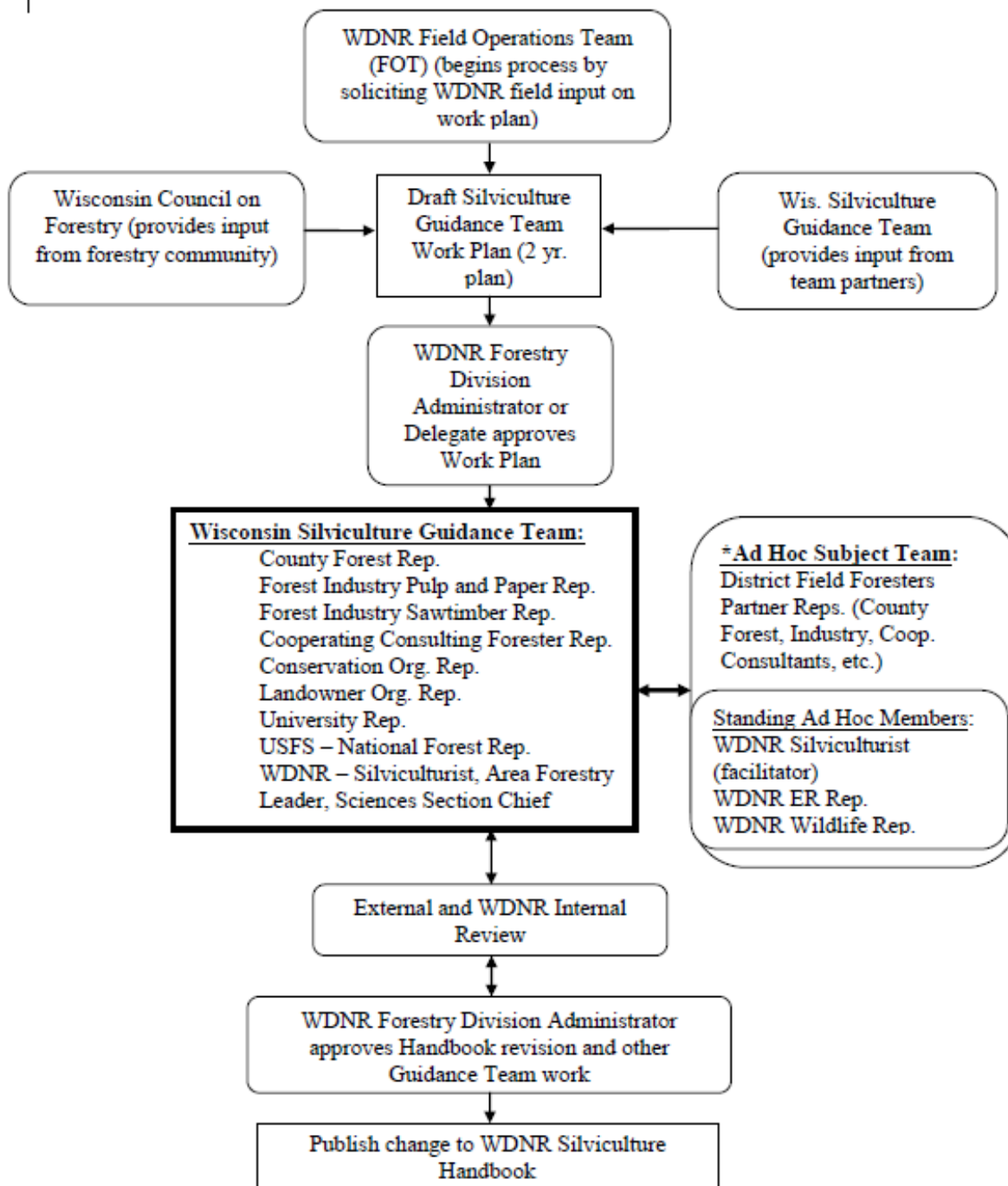
Overview

- History
- Implementation Plan
- Timeline



History

- In January, Council on Forestry supported moving towards new model for reviewing and updating Silviculture Handbook
- Similar to model used for BMPs for Water Quality, BMPs for Invasive Species, and Biomass Harvesting Guidelines
- Provides more opportunity for public input



Work Planning Process

Chapter Review Process



Implementation Plan

- April – Organizations invited to participate on new Silviculture Guidance Team
- May – Existing Silviculture Team meets for last time
- June – New Silviculture Guidance Team meets for first time
- July – New Ad Hoc Teams begin work on Red Maple, White Birch & Jack Pine chapters



Silviculture Guidance Team

1. County Forests: WCFA
2. Pulp and Paper Industry: Wisconsin Paper Council
3. Sawtimber Industry: Lake States Lumber
4. Cooperative Consulting Forester: WCF
5. Conservation Organization: TNC
6. Landowner Organization: WWOA and/or large LO
7. University or Forest Service Research: UWSP, UW – Madison, or UWFS Northern Research Station
8. USFS – National Forest: CNNF
9. Forester/Logger: GLTPA
10. DNR Silviculturalist
11. DNR Area Forestry Leader
12. DNR Forest Sciences Section Chief



Silvicultural Guidance Team

- Review updates to Silviculture Handbook Chapters
- Review related silviculture guidance like Endangered Resources species guidance
- Help establish handbook priorities for review (work planning)
- Staggered three year terms



Ad Hoc Teams

- Subject Specific
- Focus on specific chapters or issues
- 6 to 8 members
- Members can include DNR, County, industrial, and private foresters
- Silviculturalist, ER, WL
- Active participants who contribute



Ad Hoc Teams

- One day meetings
- Meetings every two to three months
- One to two years to complete review, depending on scope of review, complexity of chapter, and other issues



Silviculture Team

- Last meeting May 2013
- Wrapping up Swamp Hardwood Chapter
- Red Maple & White Birch continuing
- Transition to Red Maple & White Birch Ad Hoc Teams



Timeline

- April – Invite groups to participate on SGT
- May – Last meeting of existing Silviculture Team
- June – First meeting of SGT
- July – Ad Hoc Teams begin work
- November – Next SGT meeting

Questions?





Science Section Vacancies

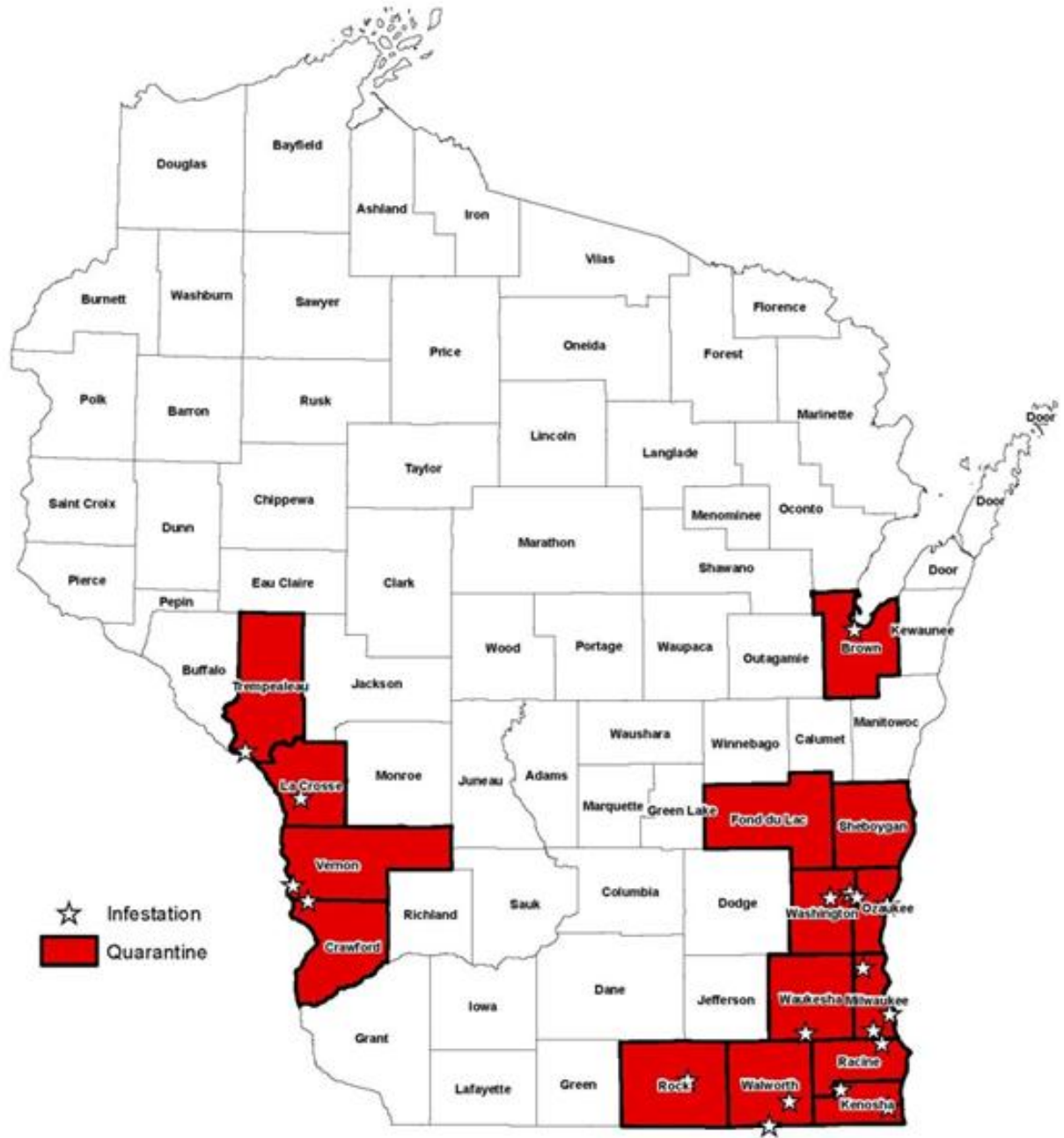
- Forest Health Program
 - Spooner Forest Health Staff Specialist
 - Plymouth Forest Health Staff Specialist:
Filled 3/24
- Nursery Program
 - Hayward Assistant Superintendent
- Sciences Program
 - Forest Hydrologist: Permission to Fill
 - Economist: Permission to Fill
 - Geneticist



Forest Health Program

- New Forest Health Team Leader
 - Becky Gray, Fitchburg Forest Health Lab
 - Came from DATCP
 - Masters in Entomology, worked with Ken Raffa at UW-Madison on Gypsy Moth in CNNF
 - Experience with Gypsy Moth and EAB

Current EAB Quarantine in WI



Implementation of Annosum Guidance

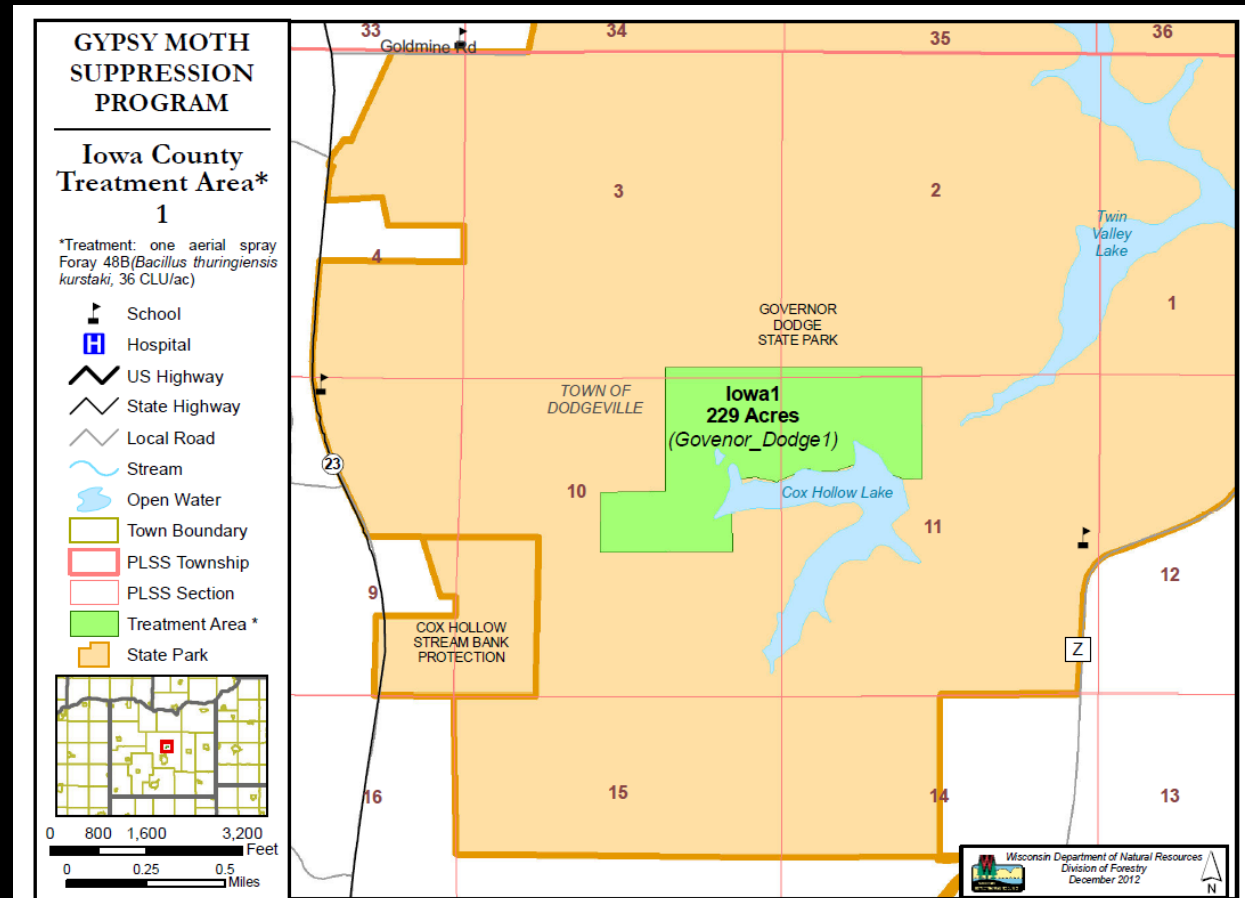
- Annosum fungicide treatment guide was approved by the Council on Forestry on 1/31
- Target implementation date is May 1, 2013
- Guide is designed to reduce the risk of introduction of annosum root rot
- State land managers will be required to use the guide and its use is recommended to private landowners
- Currently reviewing options for bidding

NR40 Language Change Proposal

- Want to eliminate overlap of regulation with state and/or federally quarantined organisms
- Proposed language change would clarify that possession, transport, transfer or introduction of a prohibited or restricted organism is allowable within the boundaries of a federal or state quarantine for that organism

2013 Gypsy Moth Suppression Spray

- One spray block at Governor Dodge State Park
- 229 acres





Nursery Program

- County Forest Survey
 - Provided valuable insight to Nursery Program
- Reminders
 - Graded & pruned stock available at 50% discount to counties
 - Improved Jack Pine seedlings available in 2014



Nursery Program

- Jack Pine Buying Stations
 - Survey identified increased need for seed for direct seeding
 - Establishing buying stations in Barnes and Black River Falls
 - Working with counties on timber sales that may be used to collect seeds
- Improvements to Seed Extractor



Nursery Program

- Seed Policy
 - Current policy limits use to direct seeding
 - Issues came up at CF certification audit, in county forest surveys, and recent purchase
 - Evaluating policy this summer



Nursery Program

- Seeking information and ideas on how to take utilize Department's investment in nursery facilities & staff to improve reforestation efforts in Wisconsin
- Information will be used in nursery planning effort this summer



Science Programs

- New Silviculturalists/Ecologists
 - Brad Hutnik, Madison
 - Greg Edge, LaCrosse
 - Colleen Matula, Mellen

 - All work on statewide issues



Science Programs

- BHG Review
 - BHG AC met in February
 - Joe Schwantes & Steve Probst
 - Subcommittees forming & meeting
 - Implementation & Operation SC includes Joe Schwantes, Steve Probst & Mike Wallis
 - BHG AC meetings scheduled in June & August
 - Recommendations for CoF due in September
 - DNPS, retention of FWD, definition of biomass harvest



Science Programs

- BHG Review
 - BHG AC met in February
 - Subcommittees forming and meeting in spring
 - BHG AC meetings scheduled in June & August
 - Recommendations for CoF due in September
 - DNPS, retention of FWD, definition of biomass harvest



Science Programs

- BMP Monitoring
 - State & County Lands in 2013
 - Will be contacting foresters about timber sales beginning around spring break-up
 - Will need additional information on sales that meet eligibility requirements
 - Would appreciate foresters meeting with BMP monitoring teams at sales in fall
 - Will need volunteers to participate on BMP monitoring teams



Questions?