



Photo: Robert J. Hurt

Tom Duffus, Vice-President, Midwest &  
Bethany Olmstead, Upper Midwest Program Coordinator

Across the country The Conservation Fund works with our partners to conserve land, train leaders and invest in conservation at home.

Rather than pursue our own conservation agenda and membership, we partner with community, government and corporate organizations - fulfilling their conservation priorities.

Over the past 29 years, The Conservation Fund has conserved more than 7.4 million acres of wildlife habitat, working forests, parks, trails, historic sites and more.

A hallmark of our work is an understanding that for conservation solutions to last, they need to make economic sense.

## Results as of 03/01/2014

Projects Completed:	2,643
Acres Protected:	7.4 million
Fair Market Value:	\$5.45 billion
Acquisition Costs 2013:	\$203 million
Fundraising Expenses:	<2% of budget



OUR OFFICES

## Recognition



Local, State, & Federal Government



Land Trusts



Corporations & Foundations



Community Planners



Elected Officials



Private Landowners



# Real Estate: Land and Water Conservation

**Wildlife  
Habitat**



**Rivers &  
Watersheds**



**Working  
Landscapes**



**Historic  
Places**



**Parks &  
Green  
Space**



**American  
Icons**



# Tools to Help Partners

**Revolving  
Loan Funds**



**Real Estate  
Expertise**

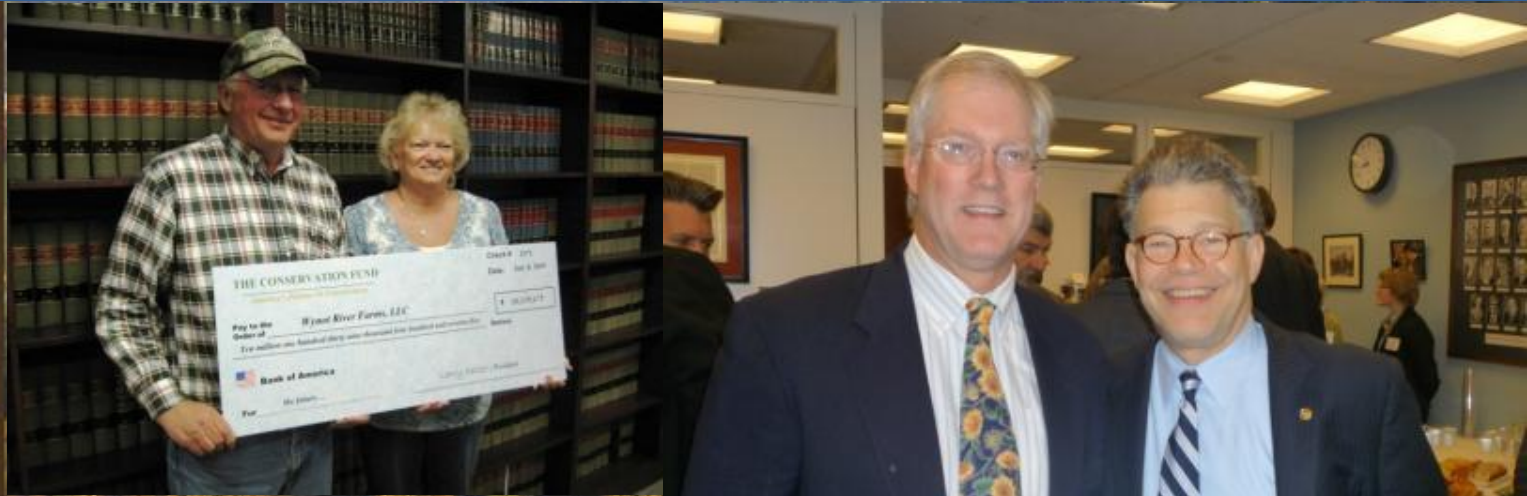


# Tools to Help Partners

## Conservation Funding

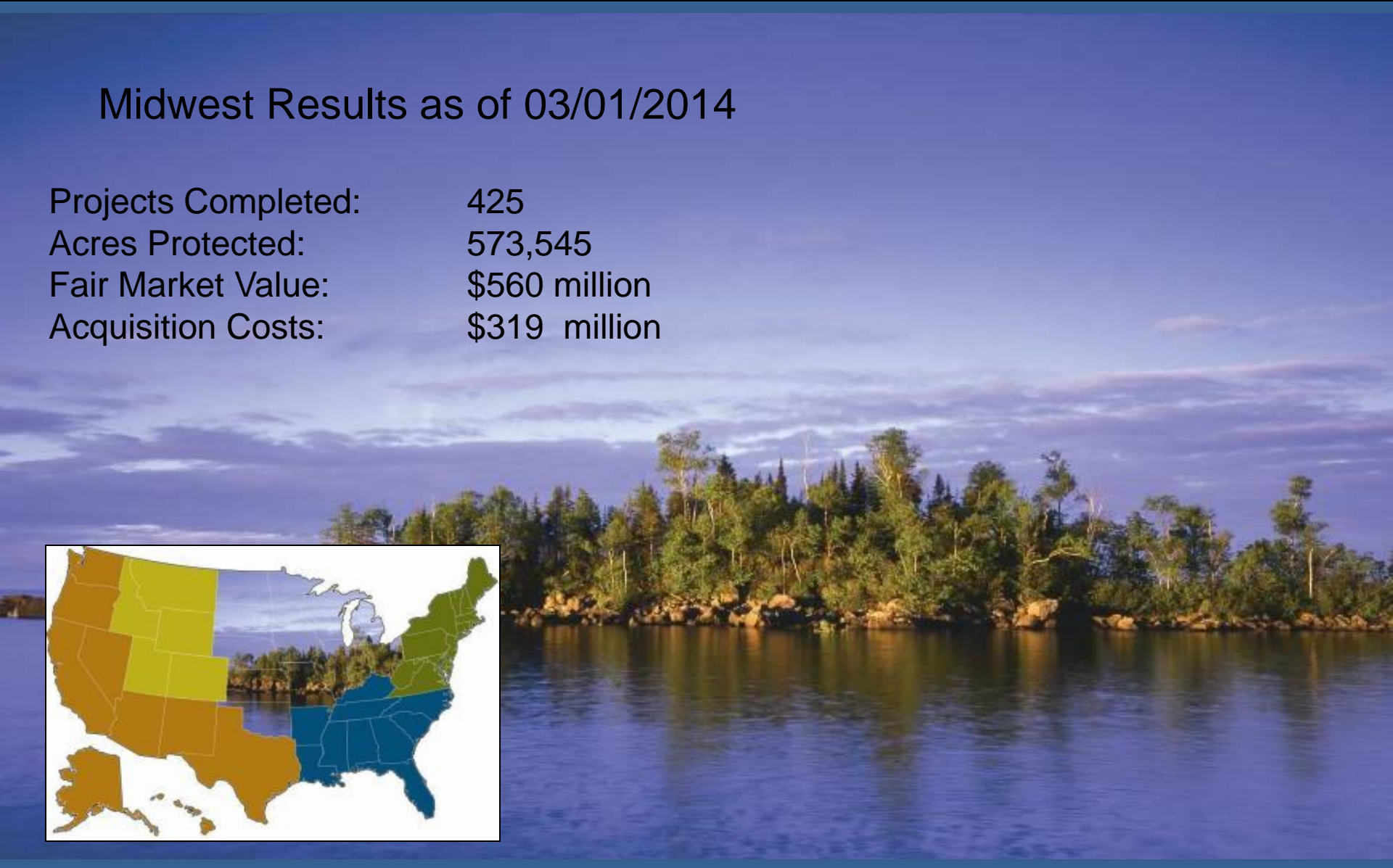


## Public Finance



## Midwest Results as of 03/01/2014

Projects Completed:	425
Acres Protected:	573,545
Fair Market Value:	\$560 million
Acquisition Costs:	\$319 million





# Midwest Project Highlights

**Great Lakes**



**Big Rivers**



**Prairies**



**Working  
Lands**



# Recent Wisconsin Partnership Examples

## Wisconsin Conservation Results:

Number of Projects: 137

Acres Conserved to date: 75,634

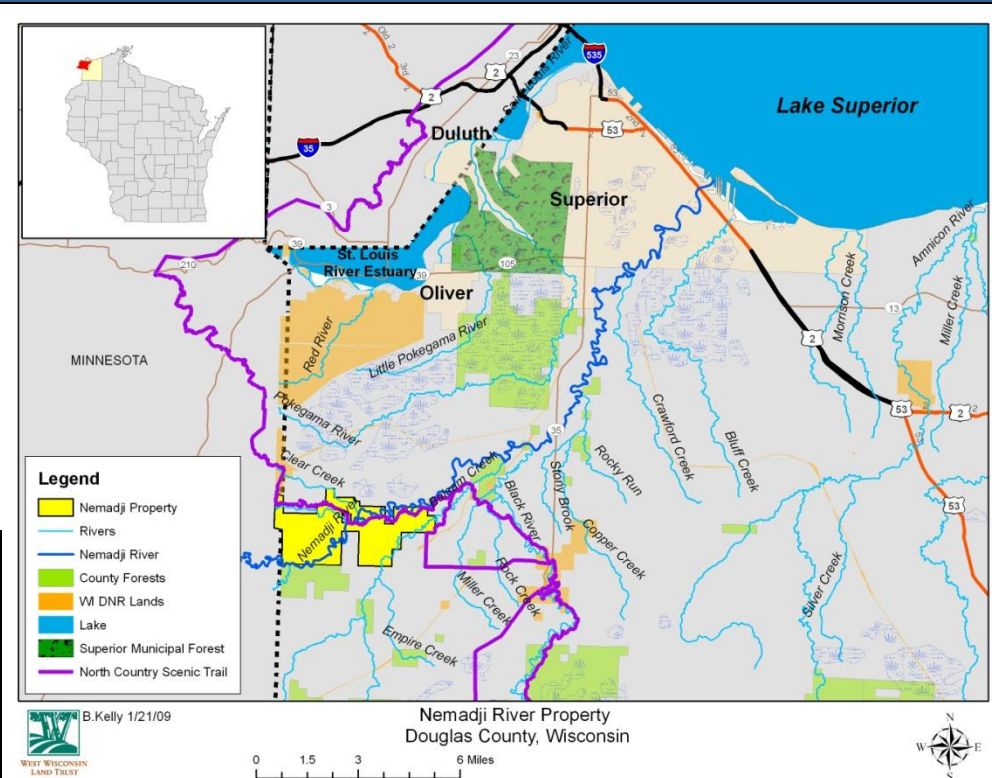
Acres Under Contract: 21,190



# Nemadji River Corridor Protection Douglas County Forests

*Nemadji River Corridor (4,000 acres):*

- Partner: Douglas County Forest
- 6 miles of the Nemadji River
- Portion designated as State Natural Area
- Seller: Wausau Paper Company

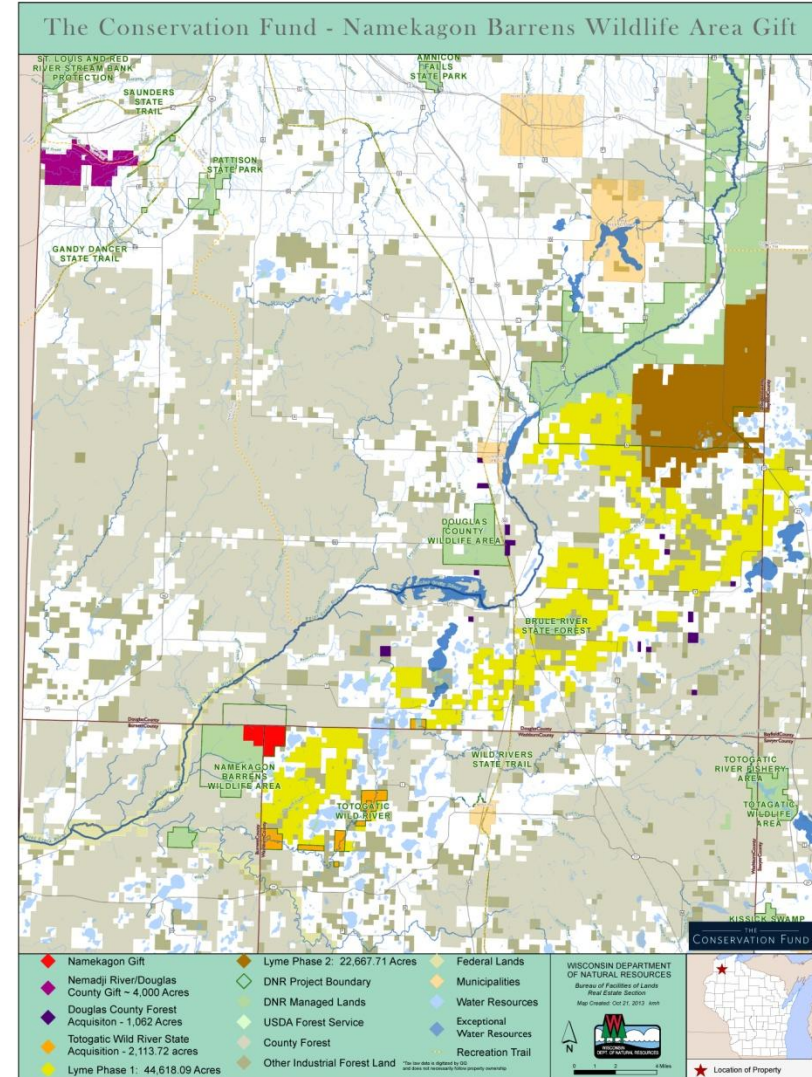


- TCF Role: Project facilitator and Buyer
- Funding: Knowles-Nelson Stewardship Program (NCO \$\$\$), Coastal Estuarine Land Conservation Program (Via WI DOA)

# Brule-St. Croix Legacy Forest – Wisconsin DNR

## *Brule-St. Croix Legacy Forest (67,207 acres):*

- Partners: Lyme Timber Company, WI DNR
- Working Forest Easement
- Globally significant pine barrens
- Connects 940,000 acres of conserved lands
- TCF Role: Project Facilitator, Buyer
- Funding: Forest Legacy, Knowles-Nelson (WI DNR & NCO), NFWF, Private Foundations



This data shown on this map has been obtained from various sources, and an attempt has been made to ensure its accuracy. This map is not intended to be used for navigation, nor is this map an authoritative source of information about legal ownership or public access. Users of this map should confirm the ownership of land through other means in order to avoid trespassing. We expressly disclaim any liability regarding accuracy, suitability, or particular use, consequences, or liability of the information depicted on this map.

# St. Croix Barrens -- Douglas County Forests

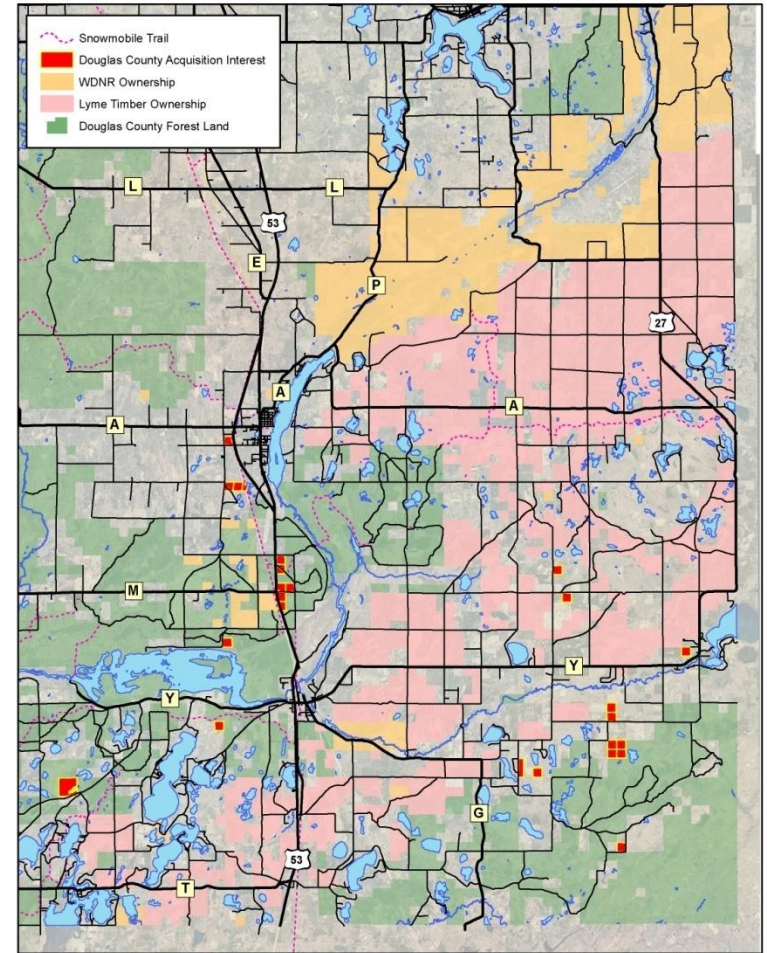
*St. Croix Barrens (1,062 acres):*

- Partner: Douglas County Forest
- Seller: Lyme Timber Company (TIMO)
- TCF Role: Project facilitator
- Funding: Knowles-Nelson Stewardship Program (County Forest \$\$\$), Douglas County



**Lyme Timber Company Ownership - County Acquisition Interest**

Douglas County, WI



# Yellow River Expansion Protection-- Juneau County Forests

## *Yellow River Expansion (876 acres):*

- Partner: Juneau County Forest
- Seller: Hamel Forest Products
- TCF Role: Project facilitator and Buyer
- Funding: Knowles-Nelson Stewardship Program (NCO \$\$\$), County Forest Loan

